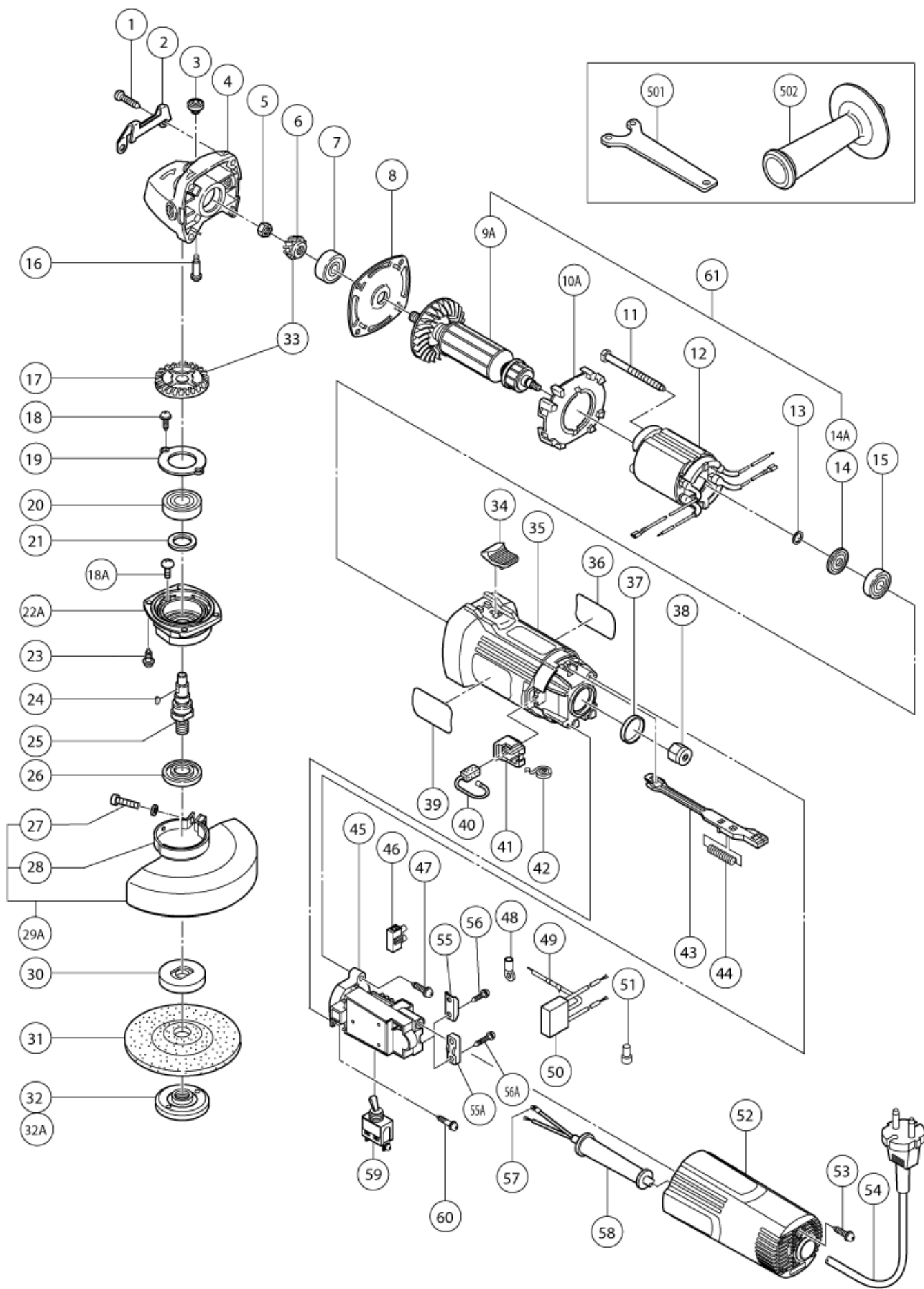


nÂ°	Artikel	Aantal gebruikt
	STANDARD ACCESSORIES	0
	OPTIONAL ACCESSORIES	0
1	937807 TAPPING SCREW D5X25 (NEW 985620)	4
2	317807 GUARD PLATE	1
3	301944 PUSHING BUTTON	1
4	316484 GEAR COVER ASS'Y	1
5	301941 SPECIAL NUT M7	1
6	316437 PINION	1
7	628VVC BALL BEARING 628VVC2PS-L	1
8	316480 BEARING HOLDER	1
9A	360540F ARMATURE 230 -240 VOLT (OLD 360540E)	1
10A	319898 FAN GUIDE	1
11	982021 HEX. HD. TAPPING SCREW D4X70	2
12	340484E STATOR (A) 230 VOLT	1
13	311737 THRUST WASHER	1
14	319386 DUST SEAL	1
14A	315877 DUST SEAL	1
15	608VVM BALL BEARING 608VVC2PS2L	1
16	301943 LOCK PIN	1
17	316438 GEAR	1
18	997263 SEAL LOCK SCREW M4X10 (W/SP WASHER)	2
18A	323556 SLOTTED HD. SCREW (SEAL LOCK) M4X8	2
19	316490 BEARING COVER	1
20	6201DD BALL BEARING 6201DDUCMAV2S	1
21	301946 FELT PACKING	1
22A	333839 PACKING GLAND (OLD 317823)	1
23	307127 SEAL LOCK SCREW (W/SP. WASHER) M4X12	4
24	940220 WOOD-RUFF KEY 2.5X8	1
25	317804 SPINDLE	1
26	301945 FRINGER	1
27	949241 MACHINE SCREW M5X20 (10 PCS.)	1
28	949454 SPRING WASHER M5 (10 PCS)	1
29A	320192 WHEEL GUARD ASS'Y (OLD 994321/23)	1
30	937817Z WHEEL WASHER	1
31	316822 D. C. WHEELS 125MM A36Q (25 PCS.)	1
32	994324 WHEEL NUT (OLD 937818Z) (NEW 337329)	1
32A	337329 WHEEL NUT M14	1
33	316436 GEAR ASS'Y	1

nÂ°	Artikel	Aantal gebruikt
34	314428 SLIDE KNOB	1
35	317802 HOUSING	1
36	NAME PLATE	1
37	995662 RUBBER RING (OLD 997511)	1
38	318721 MAGNET	1
39	HITACHI LABEL	1
40	999076 CARBON BRUSH (AUTO STOP TYPE) (1 PAIR)	2
41	317810 BRUSH HOLDER	2
42	308536 SPRING	2
43	319370 SLIDE BAR	1
44	314429 SPRING	1
45	319897 CONTROLLER (OLD 319372)	1
46	938307 PILLAR TERMINAL	1
48	311741 TERMINAL	1
49	314854 EARTH TERMINAL	1
50	317491 NOISE SUPPRESSOR	1
51	959140 CONNECTOR 50091 (10 PCS.)	1
52	319371 TAIL COVER	1
53	301653 TAPPING SCREW (W/FLANGE) D4X20 (BLACK)	1
54	500409Z CORD	1
54	500447Z CORD 2,5M 2 X 1.0 H05VV-F (OLD 500395Z)	1
54	500247Z CORD (NEW 714500)	1
55A	937631 CORD CLIP	1
55	930108 @ CORD CLIP	1
56	305720 TAPPING SCREW D4X12 (W/FLANGE)	2
57	980063 TERMINAL	1
58	953327 CORD ARMOR D8.8	1
59	314603 SWITCH (1P SOLDER TYPE)	1
60	984750 TAPPING SCREW (W/FLANGE) D4X16	2
61	360705F ARMATURE 230 -240 VOLT (OLD 360540E)	1
501	938332Z WRENCH	1
502	302142 SIDE HANDLE	1
601	937825Z RUBBER PAD	1
602	937826Z WASHER NUT	1
603	314062 SANDING DISCS 125MM C-P16 (10 PCS.)	1
604	314063 SANDING DISCS 125MM C-P20 (10 PCS.)	1
605	314064 SANDING DISCS 125MM C-P24 (10 PCS.)	1
606	314065 SANDING DISCS 125MM C-P30 (10 PCS.)	1

nÂ°	Artikel	Aantal gebruikt
607	314066 SANDING DISCS 125MM C-P36 (10 PCS.)	1
608	314067 SANDING DISCS 125MM C-P40 (10 PCS.)	1
609	314068 SANDING DISCS 125MM C-P50 (10 PCS.)	1
610	314069 SANDING DISCS 125MM C-P60 (10 PCS.)	1
611	314070 SANDING DISCS 125MM C-P80 (10 PCS.)	1
612	314071 SANDING DISCS 125MM C-P100 (10 PCS.)	1
613	314072 SANDING DISCS 125MM C-P120 (10 PCS.)	1
614	310392 DIAMOND WHEEL (SEGMENT) 125MM-D22 HOLE	1
615	323712 CASE	1
616	332789 WHEEL GUARD (FOR CUTTING)	1



Rev.3

形 名
G13YD